

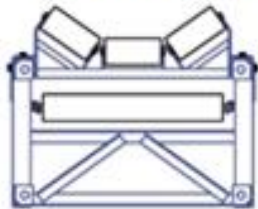


# Modular System

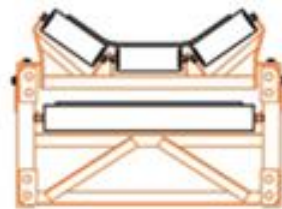
## Modular System Range

**HEIGHT FRAME 500 mm**

**BANDA 500**



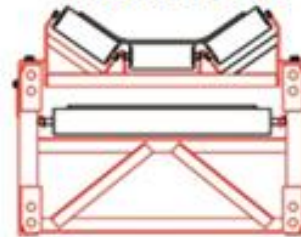
**BANDA 650**



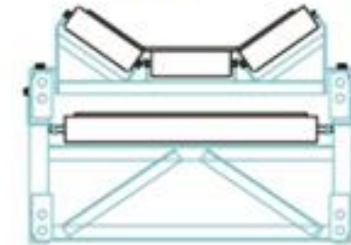
**Maximum Engine Power 11 kW**

**HEIGHT FRAME 600 mm**

**BANDA 650**

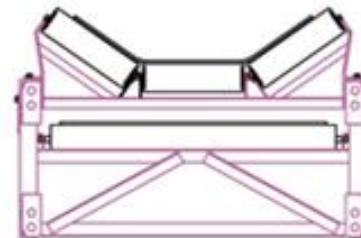


**BANDA 800**

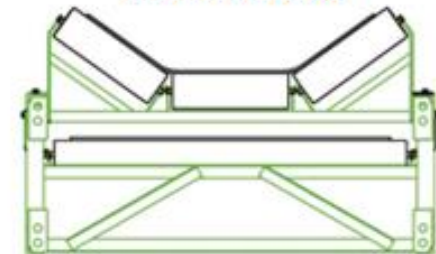


**From 15 kW**

**BANDA 1000**



**BANDA 1200**



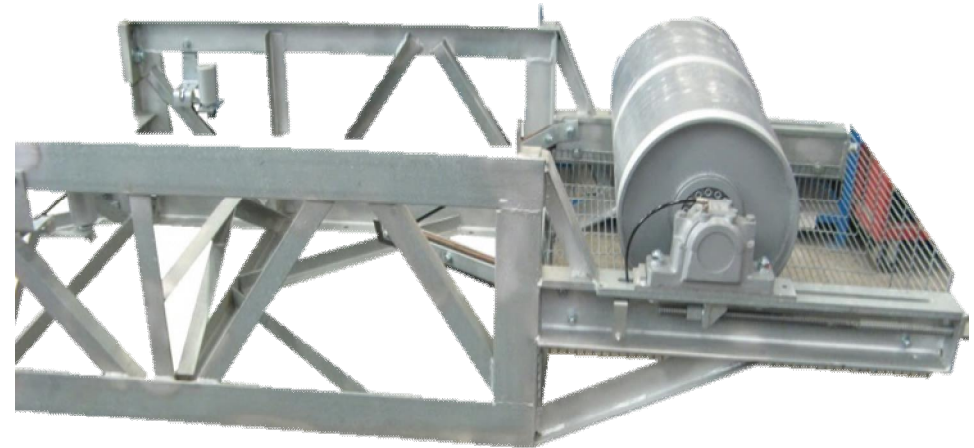
## Modular System

## Base Machine

**DRIVING UNIT**

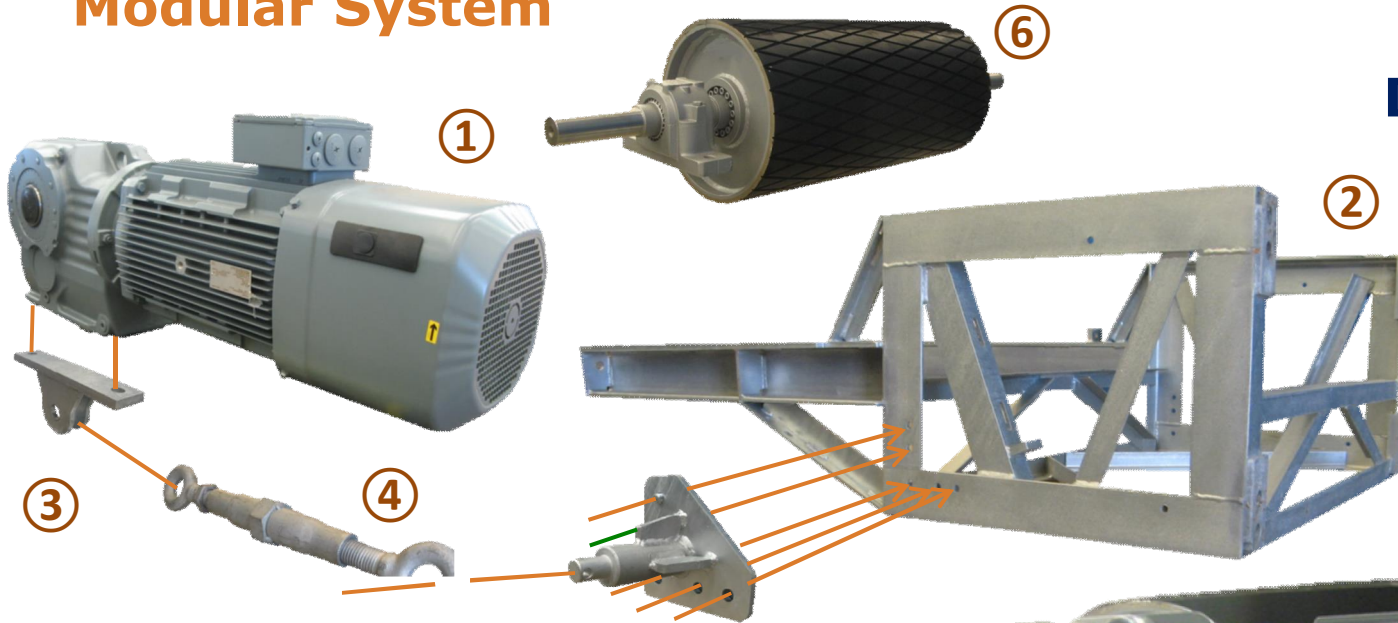


**LOADING UNIT**



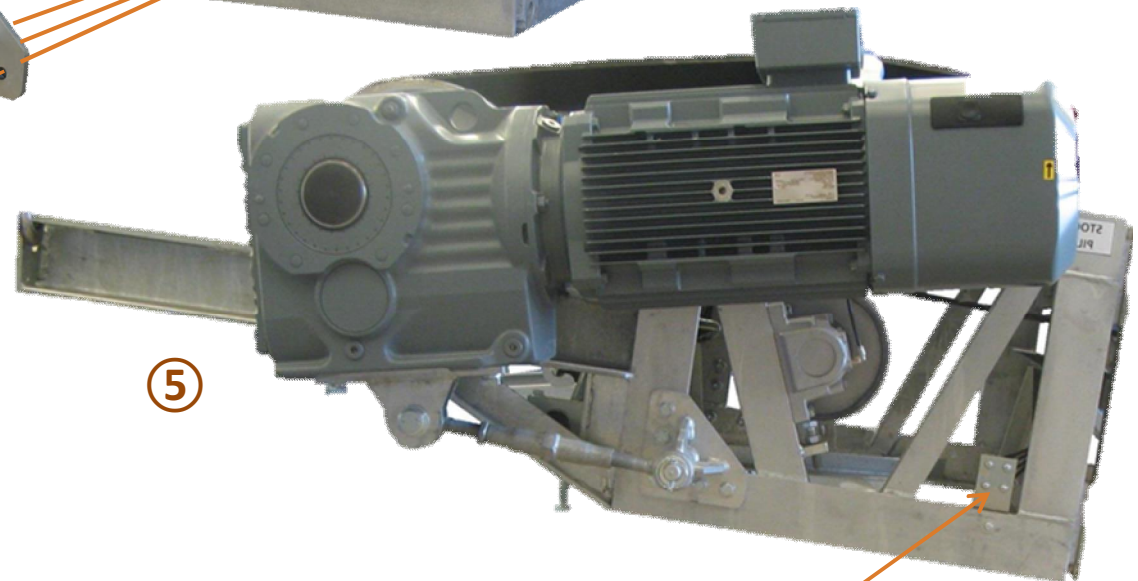
**From 30 kW will be installed 2 engines**

## Modular System



|   |  |
|---|--|
| 1 | Gear motor                                 |
| 2 | Framework                                  |
| 3 | Part attachment gear motor                 |
| 4 | Spindle to regulation the gear motor slope |
| 5 | Part attachment spindle to framework       |
| 6 | Drive drum                                 |

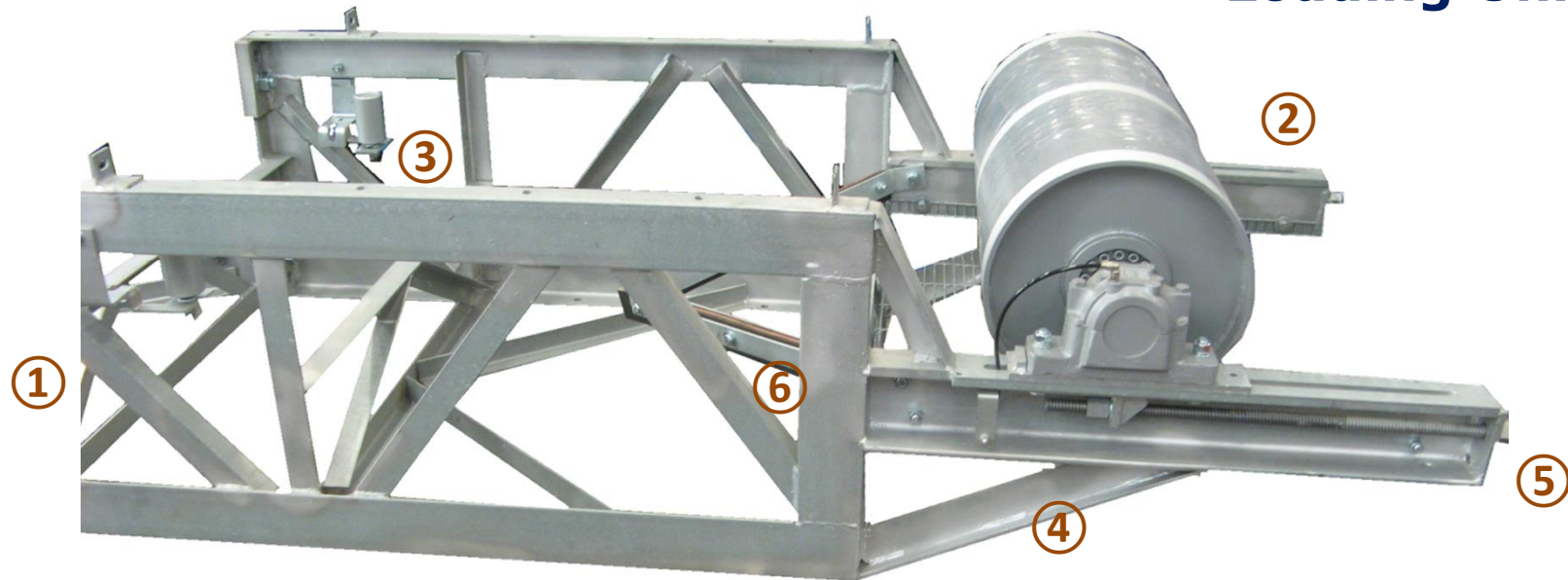
## Driving Unit



Remote Lubrication

## Modular System

### Loading Unit

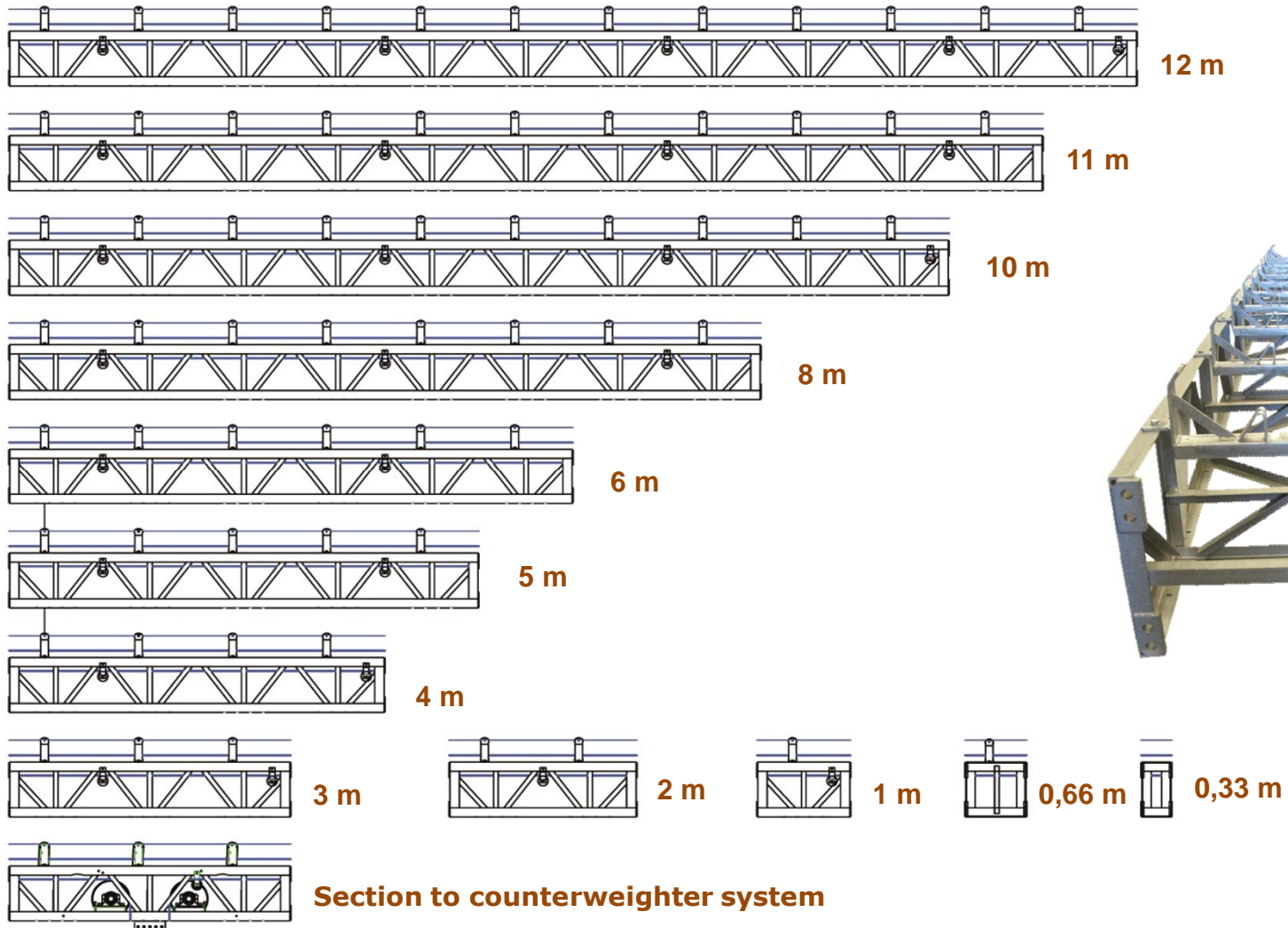


|   |  |
|---|--|
| 1 | Framework                                |
| 2 | Tail drum                                |
| 3 | Lower station with roller to centre belt |
| 4 | Lubrication point                        |
| 5 | System for tensión belt                  |
| 6 | Interior scraper                         |



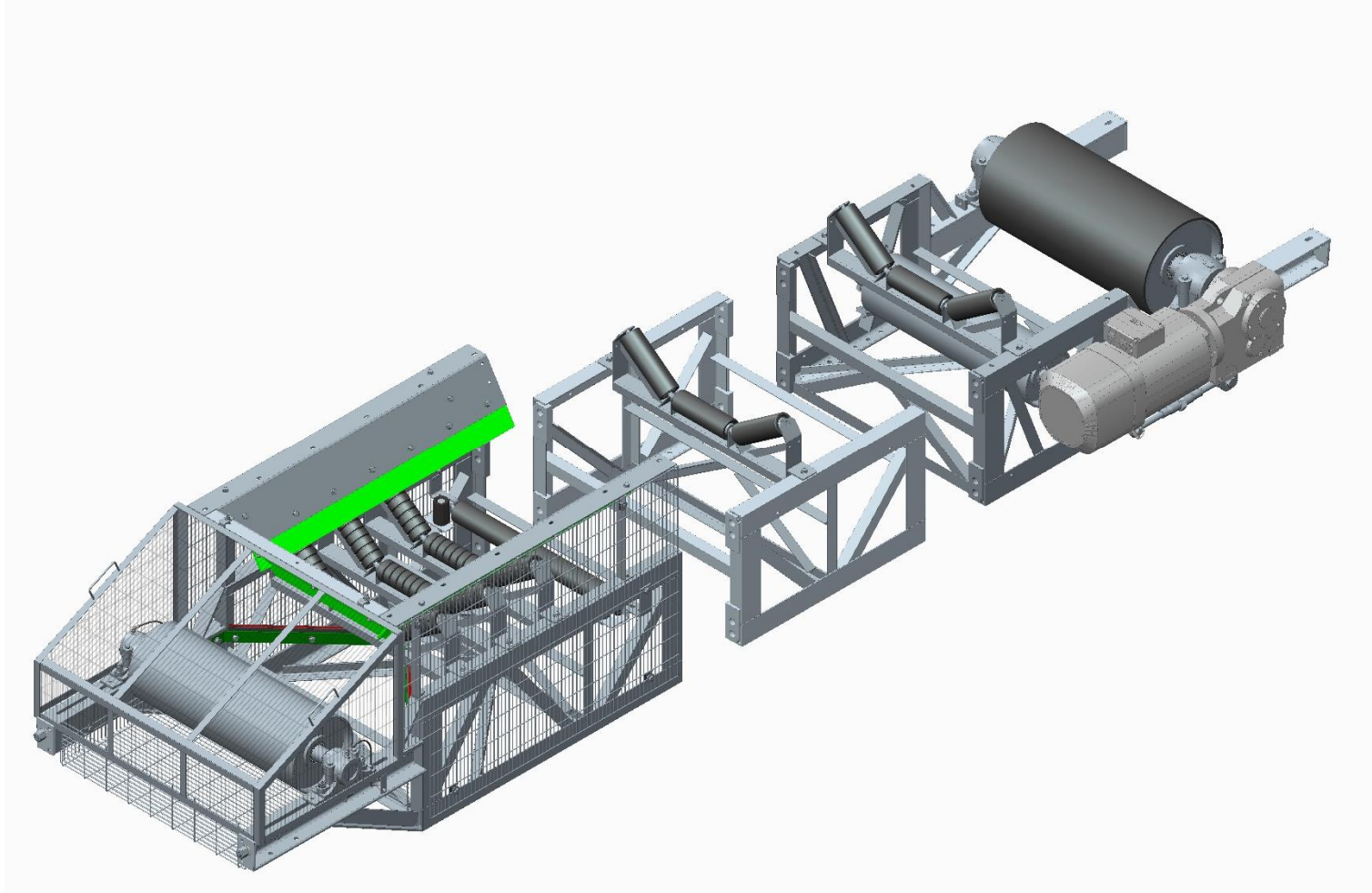
# Modular System

## Middle Sections

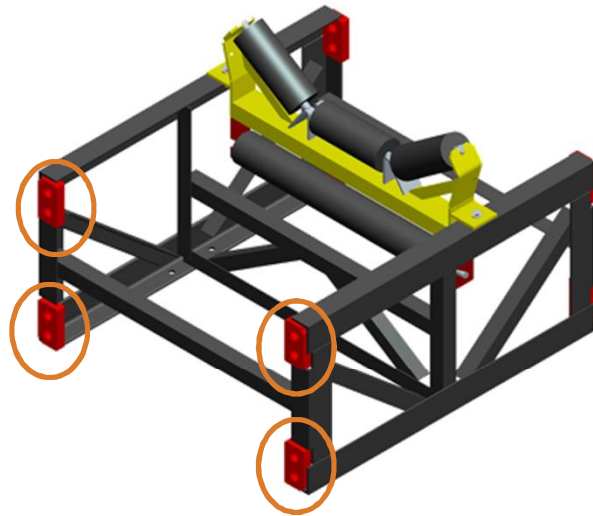


## Modular System

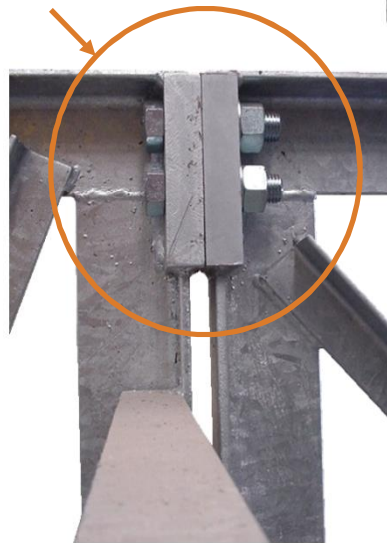
## Core Conveyor System



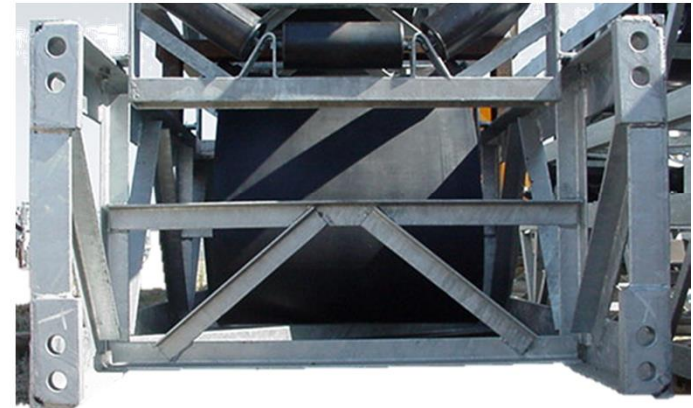
## Modular System



Nuts & Bolts (same metric)



## Joint System



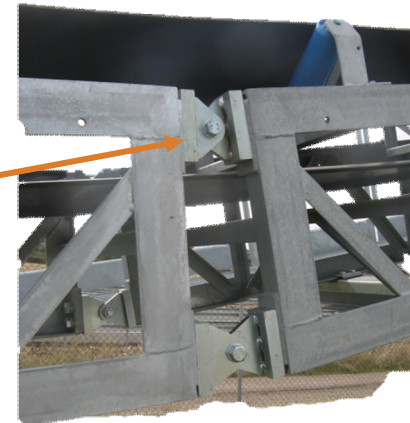


## Modular System

## Joint System



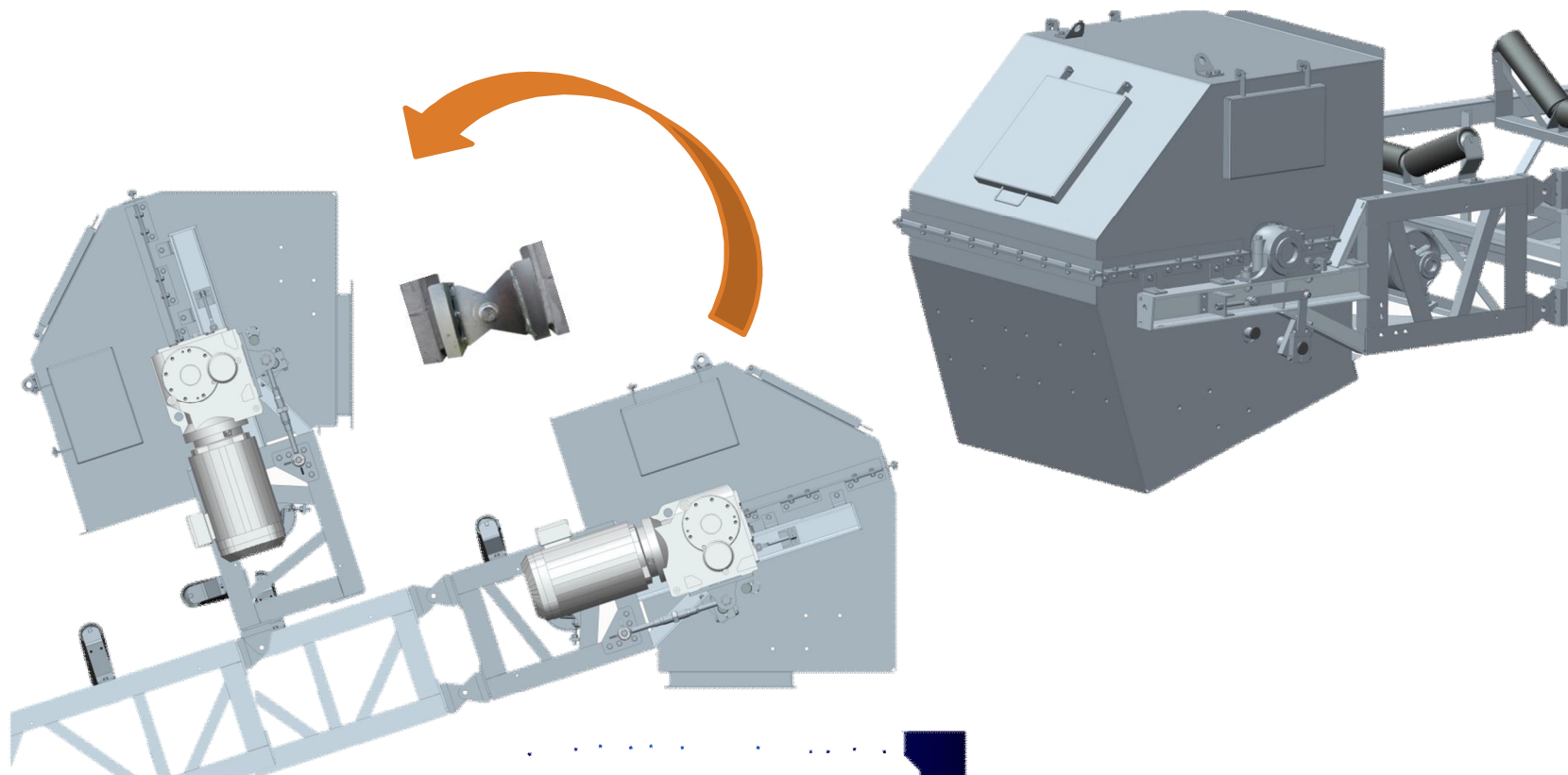
**JOINTS**



## Modular System

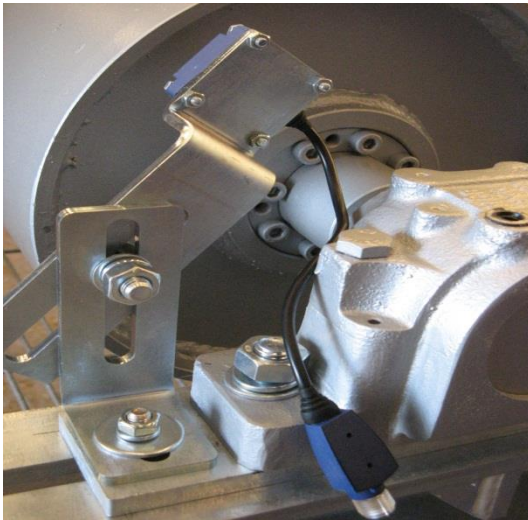
## Joint System

**This system allows movement of drive head, to do maintenance**



## Accessories

**Rotation monitor**



**Belt alignment detector**



**Emergency stop pull wire**

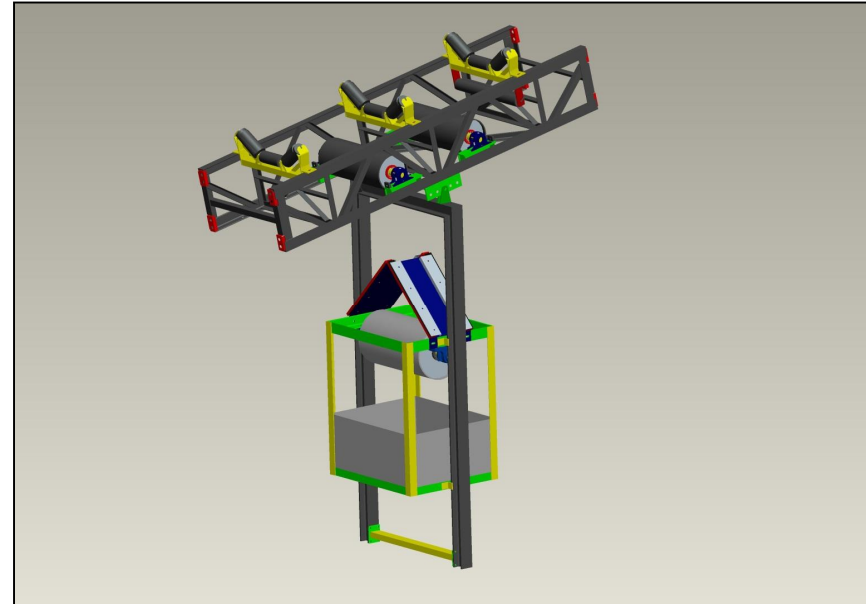


**Bars impact**



## Accessories

### Tensioning System: Vertical Counterweighted Device



**Installed in conveyors of more than 50 meters long to avoid the elongations that can appear in the belt or in the cases in which the belt withstands high tensioning, to avoid the wheel-spin of it..**



## Accessories

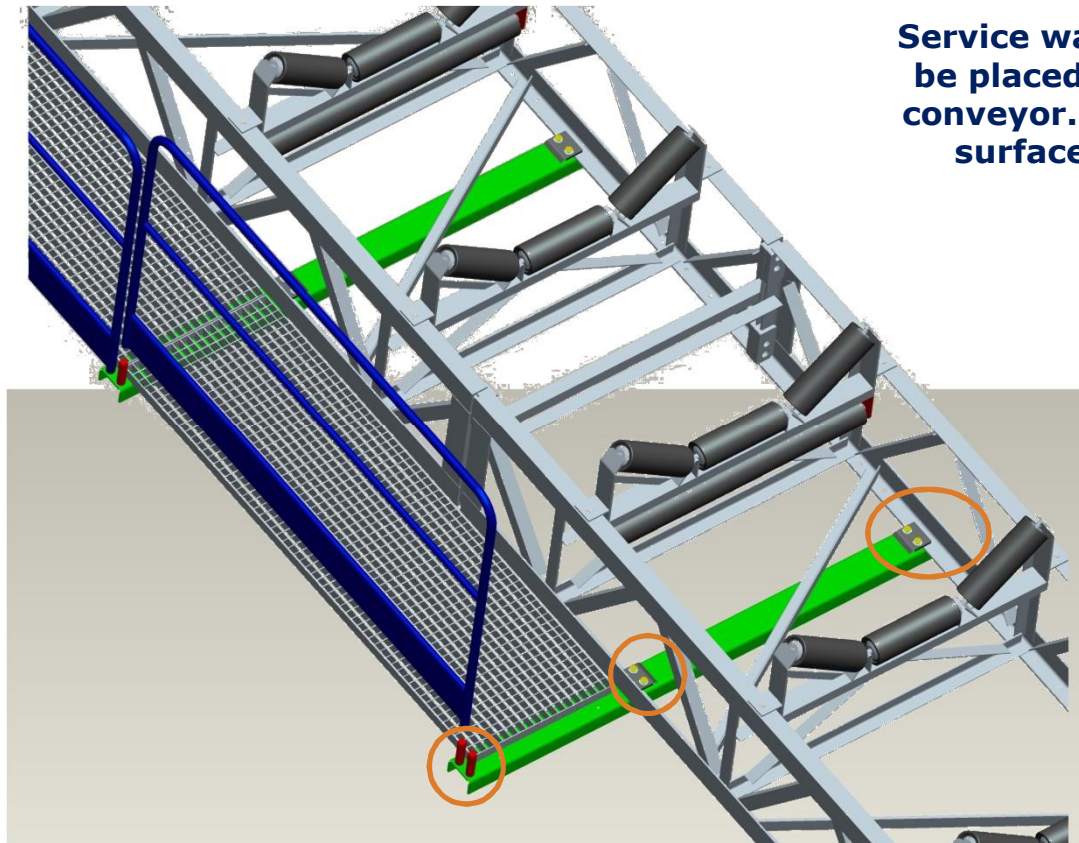
### Service Walkaway & Maintenance Platforms





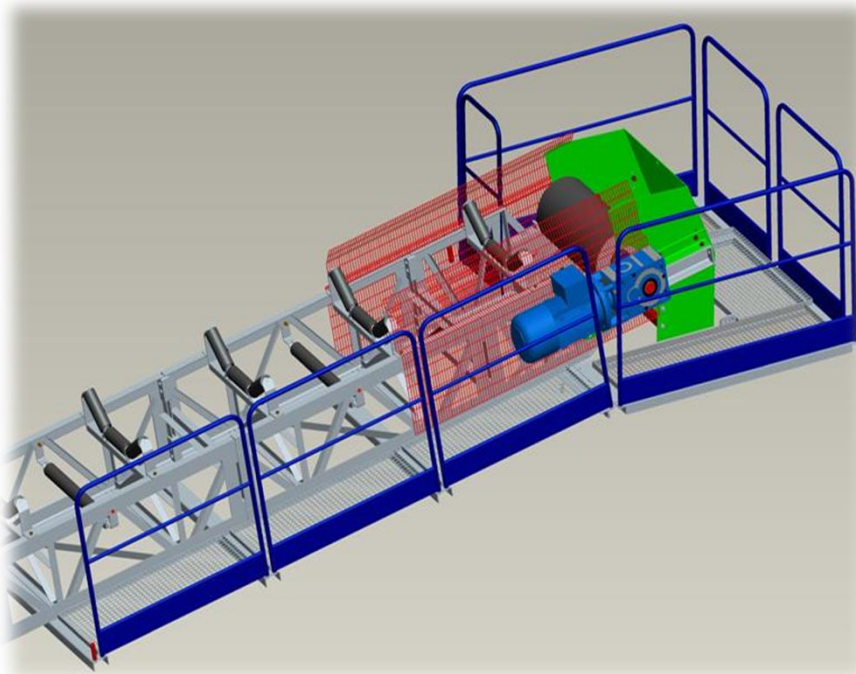
## Accessories

### Service Walkways



**Service walkways are optional and can be placed on one or both sides of the conveyor. They are made of a non-slip surface, skirting and safety rail..**

## Accessories



## Maintenance Platform



## Accessories



Covers are simetrics & can  
open in both sides



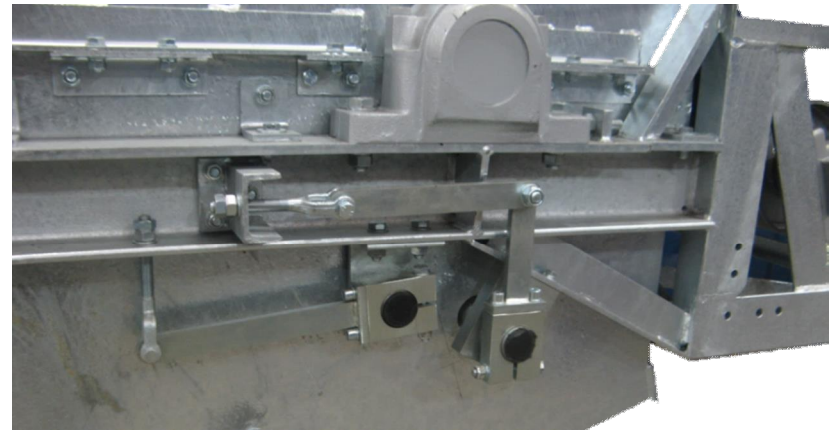
## Covers





## Accessories

## Scrappers



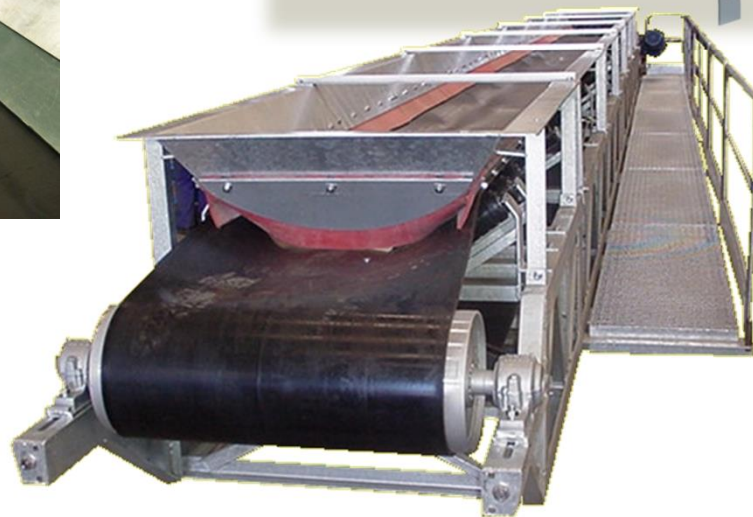
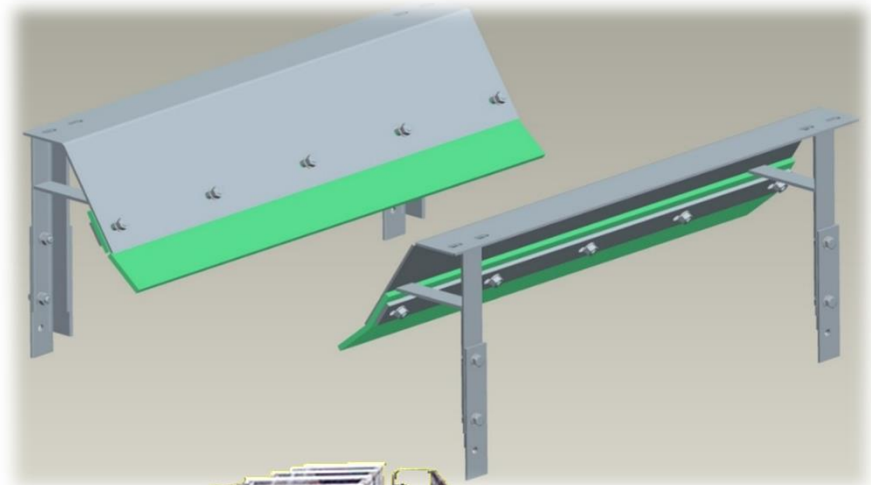
**Tungsten Scraper situed on drive drum**

## Accessories

**Panels made of galvanized steel sheet and virgin rubber that provide watertightness in the belt**



## Skirt Plates for Loading





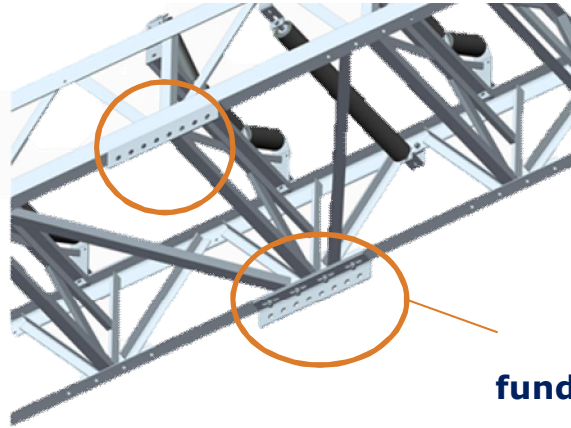
## Accessories



**Discharge Chute**

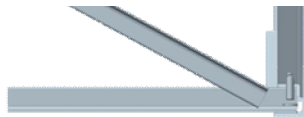
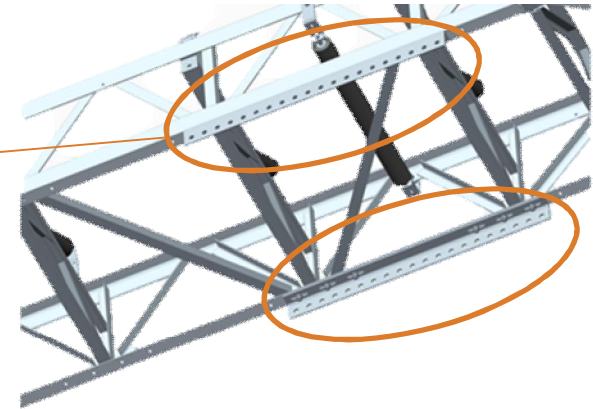


## Accessories



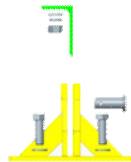
**Adaptables to  
foundation's deviations**

## Supports



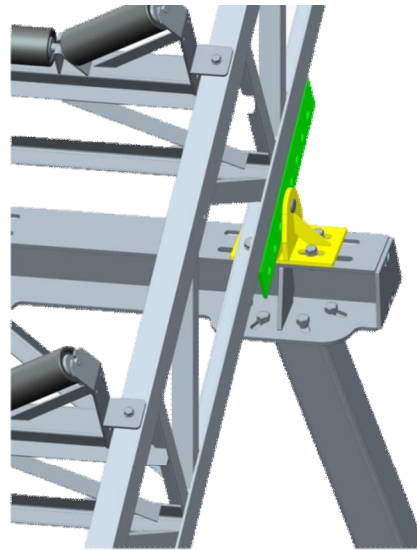
**Multi-holes**

**Intermediate Part**

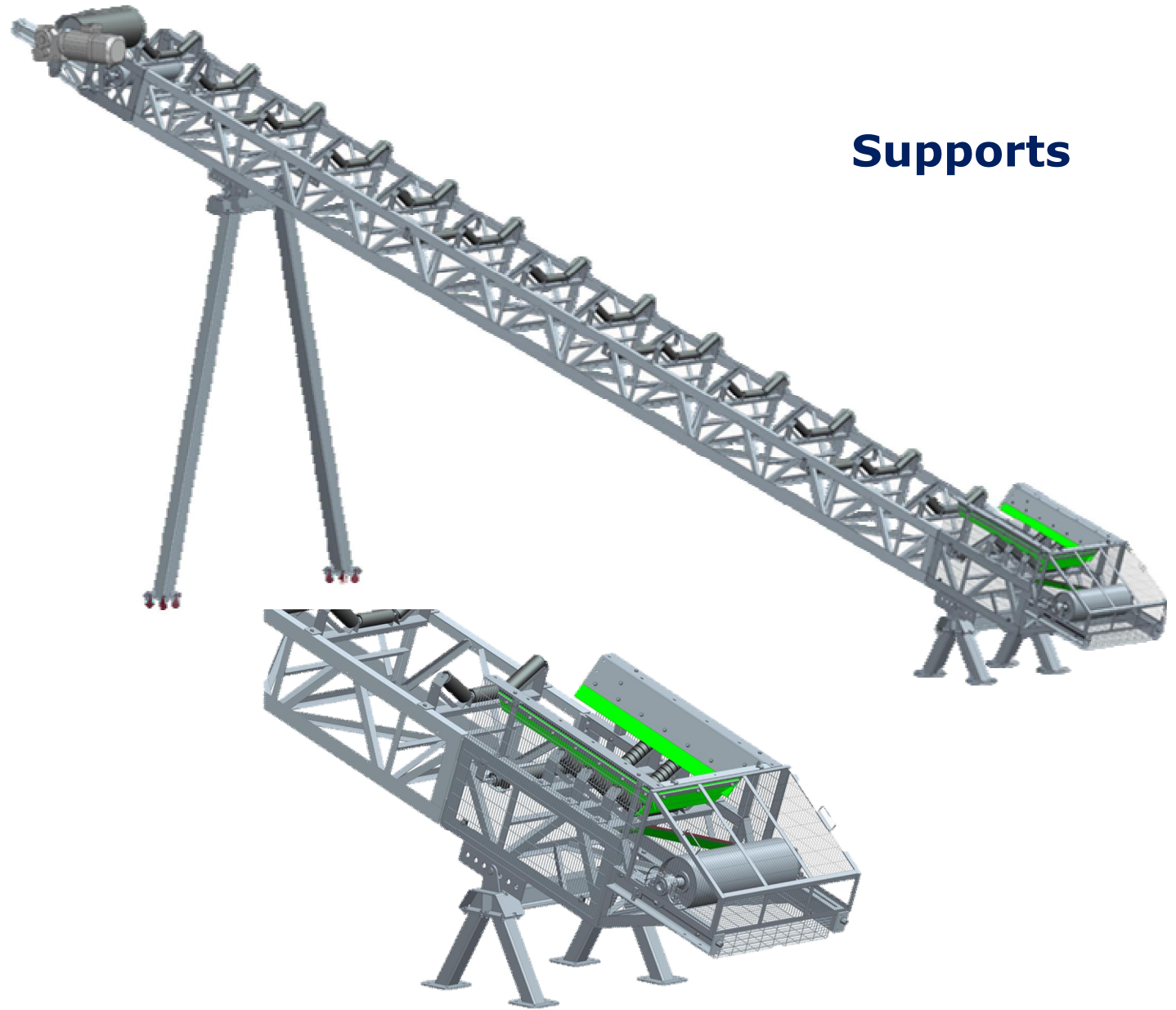
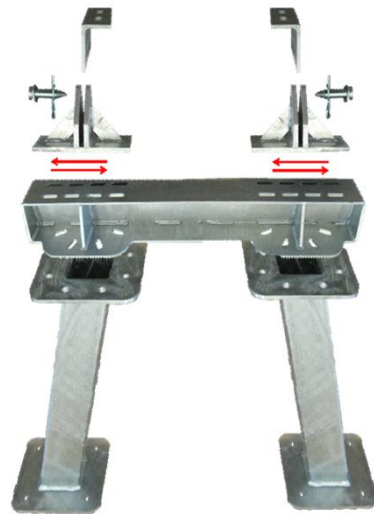


**Support**

**Profile**



## Accessories



## Supports

## Accessories



**"V" Supports**

**Straight Support**



**Big Vanes**

**Special Supports**



**Supports**





## Accessories

## Stackers

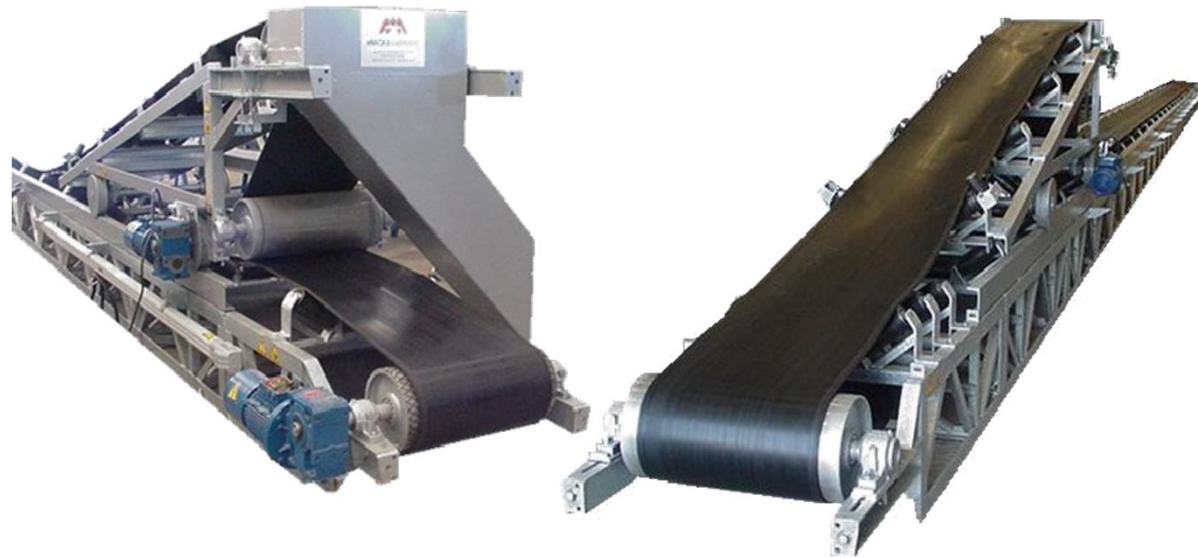


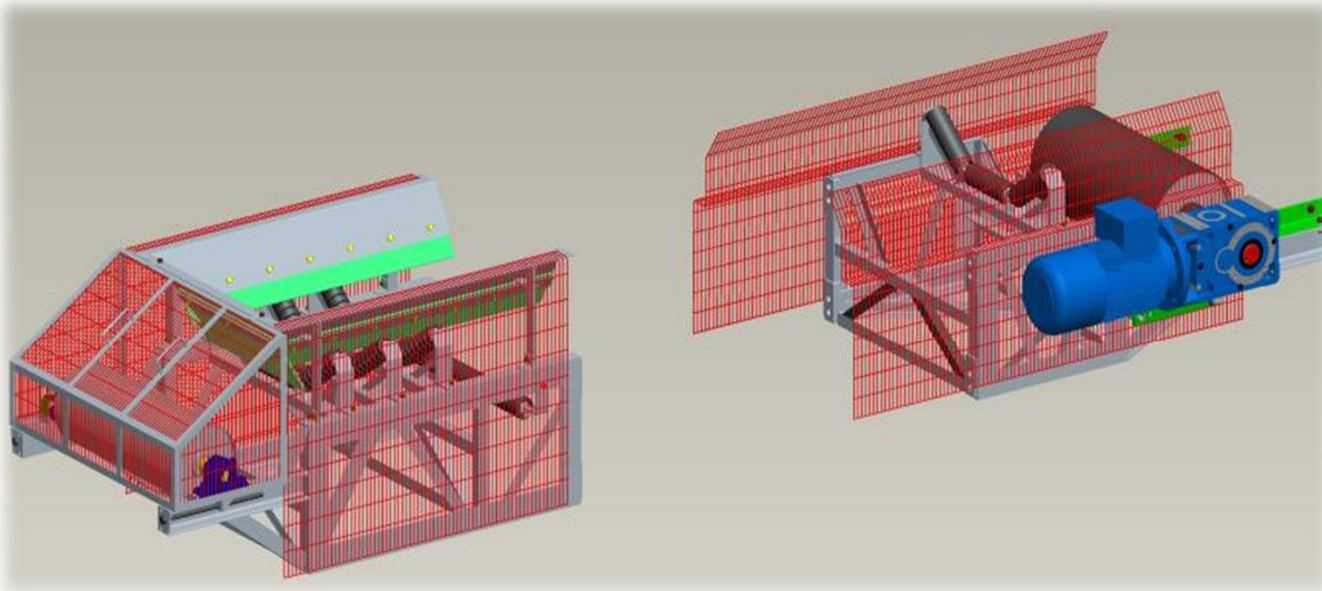


## Accessories



## Trippers





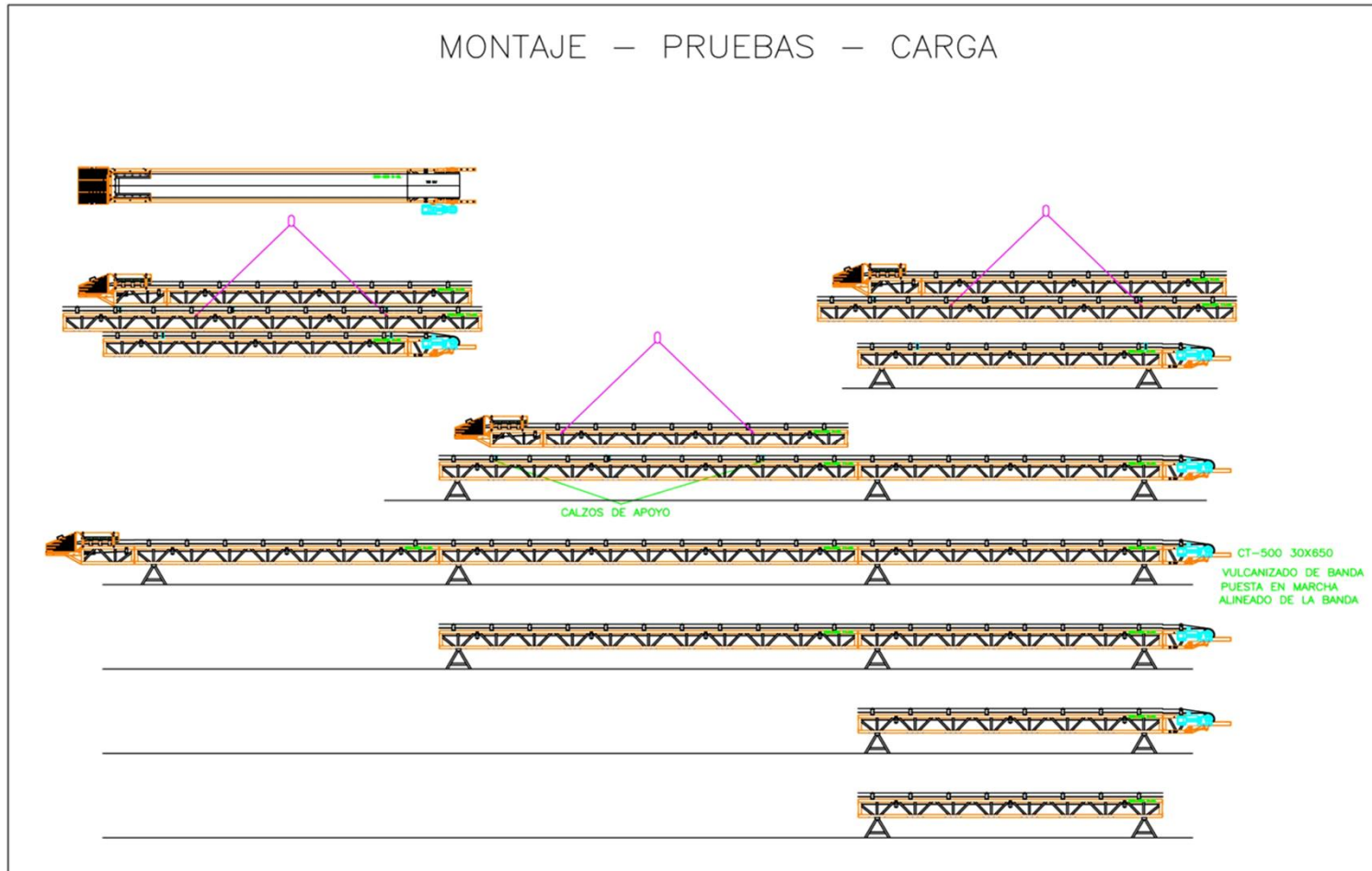
## Safe Guards

### Additional Lateral Guards

**Guards to Avoid Inferior  
Idler go Down**



# Container Load Calculation





## After Sales Service

large stock facilities, where we have from the most elemental pieces to the most complex ones, allow us to send this equipment overnight.







## **Modular System**

- “ Dynamic Conveyor Belt**
- “ Adaptable to Mills Maintenance (no need to be removed)**
- “ Interchangeable moduls between conveyors with same thickness**
- “ Wide catalogue of options to be add in any time**
- “ Standart series manufacturing process (SHORTER DELIVERY TIME)**
- “ Engines, Walkways Interchangables (Wright & Left)**
- “ Lubrication remote**
- “ First Class Components**